

# LASER

PERSONAL COMPUTER 3000

A completely original Computer System  
compatible with Apple® II software.

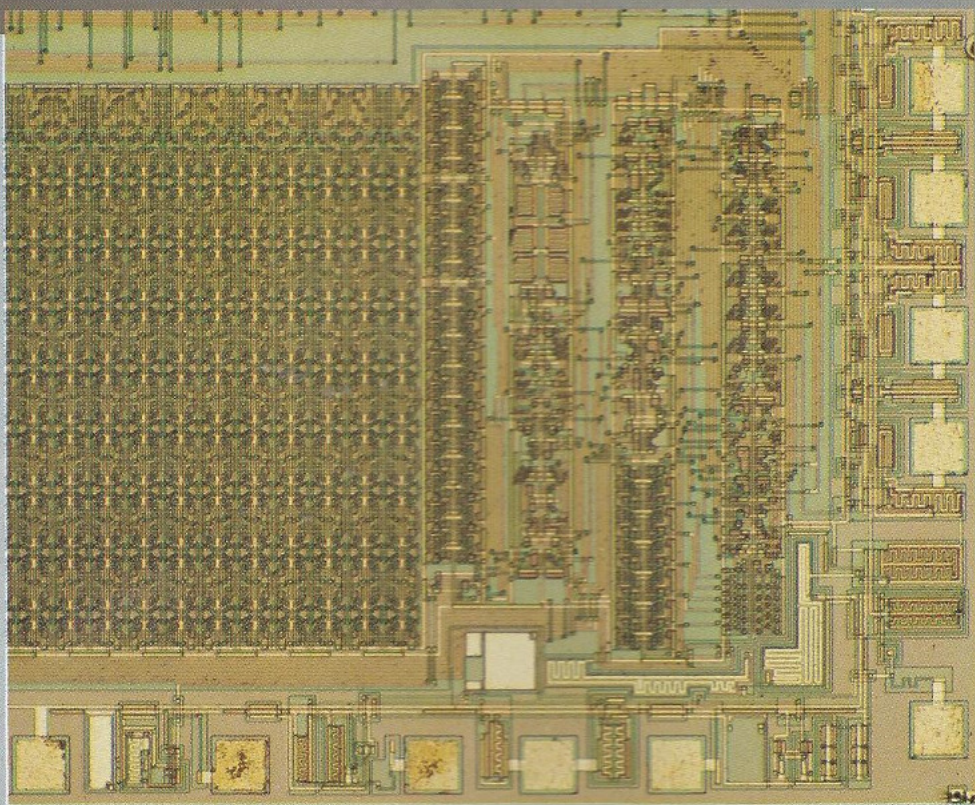


The next generation.



From the computer wizards of Video Tech





*This new LSI chip, developed by Video Technology, required many years of computer-aided design work and provides the LASER 3000 with incredibly powerful graphics resolution.*

## **Completely original to deliver more computer per dollar!**

Video Tech did not set out to reinvent the wheel with the LASER 3000. But rather to refine and improve virtually every single function and feature and capability that currently exists in personal microcomputers. To create a computer that is not a copy. But is the first of a whole new generation of personal computers. Faster. More powerful. More intelligent. Easier to use. And less expensive than any other personal computer on the market today.

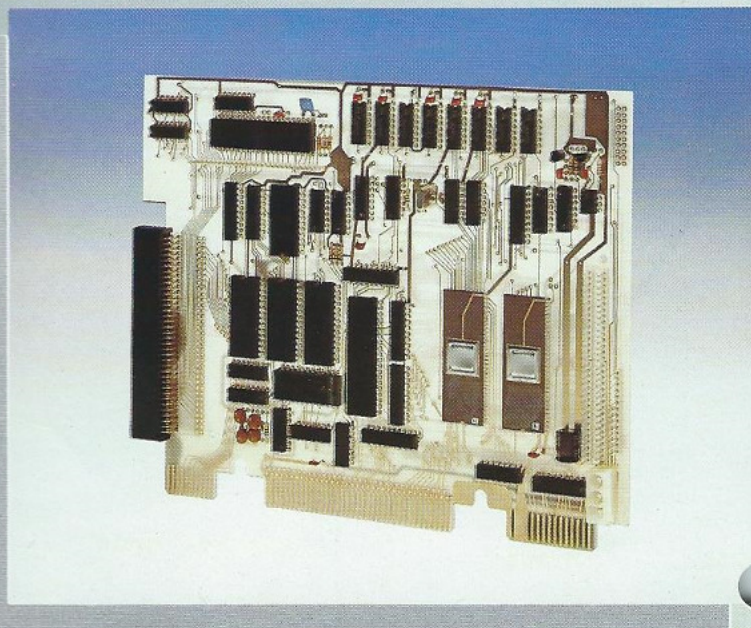
## **APPLE® II and CP/M® compatible to take advantage of the world's largest software library.**

The LASER 3000 can be configured to run Apple II® software directly. Thereby providing the user with a truly massive library of games,

education, engineering, business and other applications software. In fact, with this Apple® II software capability the LASER 3000 owner has more software at his fingertips than he would have for any other computer.

Furthermore, A plug-in Z-80A cartridge will make the LASER 3000 capable of running CP/M® software adding thousands of the

world's most popular and powerful business packages to the LASER 3000's talents.





## Inside the LASER 3000™

At the heart of the LASER 3000 lie the two revolutionary custom LSI chips designed by Video Technology. Replacing over 100 discrete IC's, these new LSI chips permit the LASER 3000 to offer a hitherto unheard of number of built-in features and functions along with the powerful kind of graphics that up to now has only been available in professional computers costing many times more.

## 2 MHz ... Double the power.

The 6502A central processor chip in the LASER 3000 runs at 2 MHz clock frequency. Over 50% faster than the Apple® II. So the LASER 3000 provides more computing power and faster programme execution.

## 64KB-192KB RAM

Specifically designed for diversified applications, you can configure your system at a low-cost entry point with 64KB user RAM and 24 KB of enhanced Microsoft® BASIC, or as a full-function system with 4 disc drives, printer, light pen, high resolution colour monitor and up to 192KB of user RAM.

## 24KB Microsoft® BASIC in ROM

Built into the LASER 3000 is the most popular and powerful Microsoft® BASIC, which has been extended by Video Technology to include sophisticated graphics and sound generating utilities. These functions, specially tailored to make full use of the special graphics and sound features of the LASER 3000, provide the user with such exceptional power and flexibility

## 560 x 192 individually addressable screen pixels

The LASER 3000 screen, in colour graphics mode, is divided into 560 horizontal by 192 vertical pixels. Twice as many as the Apple® II. So the LASER 3000 delivers super-high resolution for games, graphics and other applications.

## Built-in Centronics printer interface.

With the LASER 3000, you don't have to buy expensive interface units when you want to use a printer. A full Centronics-bus interface is built right in.

## 80/40 column text display. Built in.

Professional terminal text display modes include both 80 and 40 column text displays x 24 lines. Either mode is software selectable to suit a wide range of applications.

## 81 key full-stroke keyboard.

Ordinary computers like the Apple® II, offers only 54 keys or less. But LASER 3000, the new generation, offers 81 positive feedback, full-stroke keys with a separate numeric keypad, 4 cursor-control keys and 8 user-defined function keys. And with full shift for upper and lower case, the LASER 3000 provides you with well over 100 alpha-numeric characters.

## 8 user-defined function keys

You can programme in the functions which you want these keys to perform. Perhaps graphics commands or programming functions. Then you can do the entire operation with one touch.

## 4-channel sound generation

Rather than the single channel most computers give you for sound, the LASER 3000 delivers 4 full channels. So you can generate sound effects or music on a scale you've never heard before.





## THE ONE TO GROW ON!

With the LASER 3000, you start with an extremely powerful and versatile personal computer. But that's only the beginning. You can expand the system as far and as wide as present computer technology allows.

### Ram expansion to 192KB

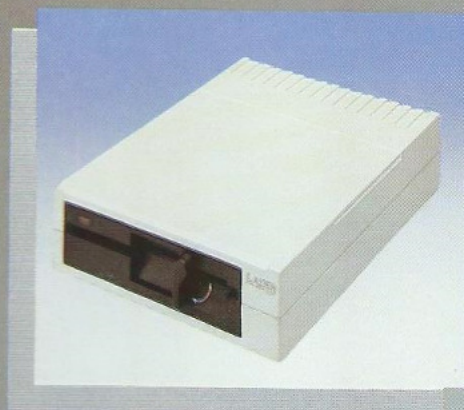
The LASER 3000 starts off with 64KB RAM. But you can add on a powerful 128KB RAM expansion card to create a massive 192 KB RAM. Which will allow you to run Hi-RAM applications like animation graphics and word processing.

### CP/M® Z80A soft card expansion

With this expansion unit, you can run CP/M® software, the world's most popular and versatile business software for word processing, accounting and electronic spreadsheets.

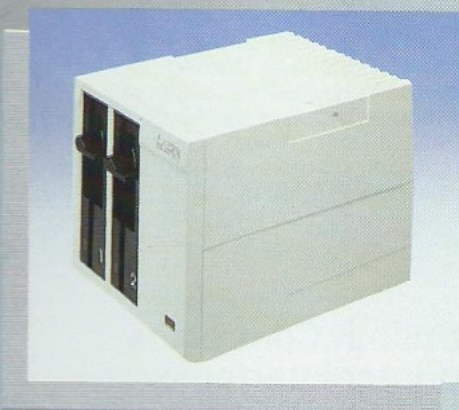
### 16-bit 8088 Plug-in

You can turn your LASER 3000 into a powerful 16-bit processor with the addition of one expansion module. Enabling the user to run CP/M® 86 and MS DOS® operating systems.



### Single/Dual floppy Disc Drives

For fast data loading and storage, you can use this 5 1/4" floppy Disc driver unit. Single/dual drives allow you to copy discs, and to store up to 164 KB per disc.



### Add on all Apple® II compatible peripherals

This Expansion Box allows you to add on any of the wide range of Apple® II compatible peripherals for business, design work, or home entertainment.



### Dot-matrix text/graphics printer

Both text and graphics are supported with this dot matrix printer.

### 4-colour text/graphics printer/plotter

The LASER PP40 Printer/Plotter offers full 96 character ASCII text capability along with fine-line 4-colour graphics. For graphs, charts, designs and even portraits. Anything you can show on your computer screen, the LASER PP40 can print.

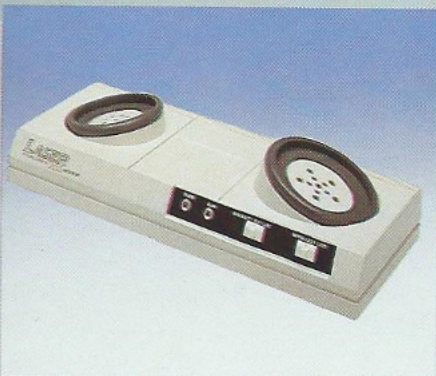
### Light pen

For immediate interaction with the computer, this light pen allows you to manipulate information on the screen.

### RS232 serial interface

This interface provides a universal means of serial communication between other computers & peripherals.





## Joysticks

Fast-response Joysticks with dual FIRE controls and rugged construction. Ideal for use with pre-recorded games or with games you invent yourself.

## Modem

With this modem unit, your LASER 3000 can talk to other computers through the telephone lines. Across town or across the world.



## Data Cassette Recorder

For personal use, this cassette recorder is all you'll ever need to store and retrieve data and programmes. Specially designed for the LASER 3000, this cassette recorder eliminates the need for precise volume control setting. Programmes and data always are transferred at the ideal rate.

## RGB High resolution monitor

Specially engineered to give you the most from your LASER 3000's graphics capabilities, this monitor is of primary interest to designers, engineers and architects.

## Composite Video Monitor

For most home and business applications this is the ideal monitor giving the best price performance value for displaying graphics and text.

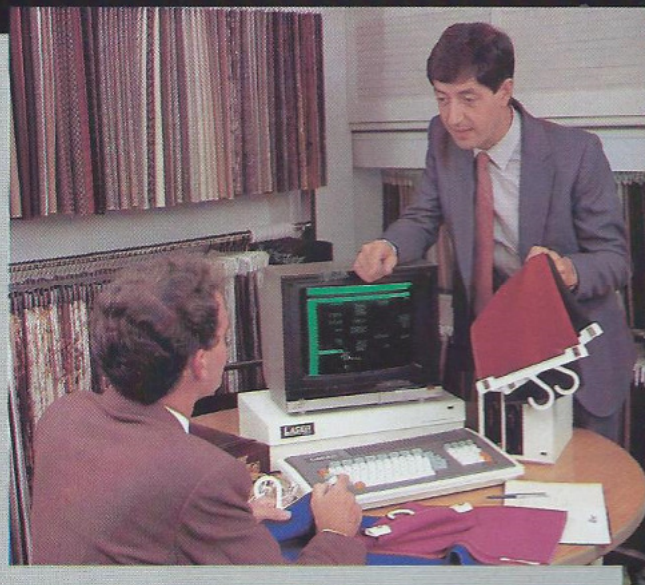
## RF modulator for TV

This unit allows you to use your LASER 3000 with any ordinary TV set and provides ideal colour, resolution and animation for most uses.





# THE LASER 3000 AT WORK!



## IN THE OFFICE

With an incredible library of business software and the kind of high-resolution graphics that cater especially for business applications, the LASER 3000 can be a personal executive tool or the heart of entire departments and small businesses.

## IN THE CLASSROOM

Ruggedly built to stand up to classroom use, the LASER 3000 is also extremely easy for children of all ages to learn on. With the exceptional range of available software and the power and potential of the machine, the LASER 3000 is an ideal tool, for both learning and teaching.



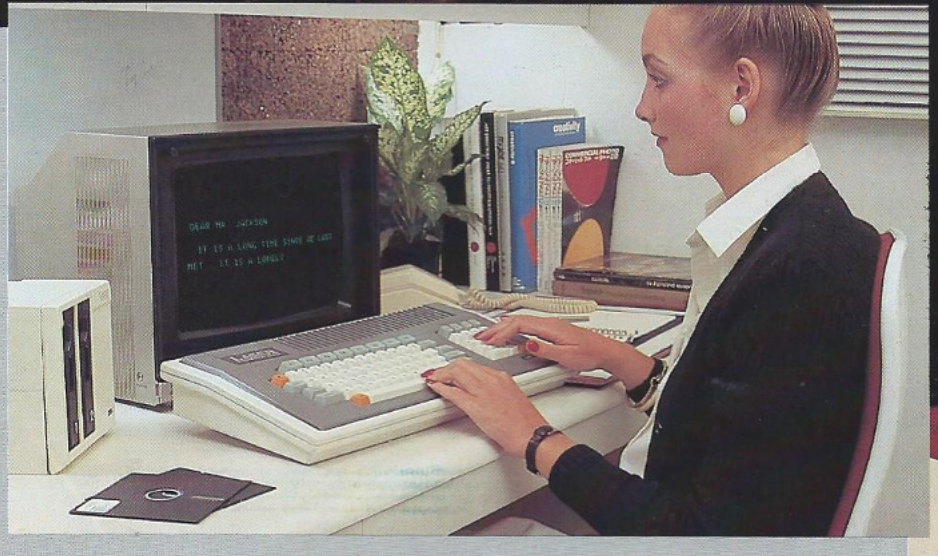
## IN THE

The power  
LASER 3000  
the budding  
Programmer  
capable  
limits, the  
mind with  
the...  
even the ju



## IN THE LIVING ROOM

The widest range of games in the world and great variety of educational software can make the LASER 3000 into an entertainment centre and focus for the entire family.



## THE ATTIC

and potential of the LASER 3000 make it an ideal tool for the computer genius. It is available in all languages and offers expansion to massive capabilities. The LASER 3000 presents fresh possibilities, yet is well within the budget of the junior genius.





# SOFTWARE LIBRARY

The LASER 3000 enables you to make use of a truly gigantic library of top-quality software. In addition to software specially written for the LASER 3000 to make use of all its powerful features. You can also run software written for Apple® II, CP/M® & UCSD P-SYSTEM®. So you have more ready-to-run software at your fingertips with the LASER 3000 than you'd have with probably any other computer in the world.

## Do your programming in almost any computer language!

Miscrosoft\* BASIC is built-in your LASER 3000. But you can also use virtually any other programming language in the world. Fortran, Cobol, Pascal and even Assembly Language software is available.

HOME & HOUSEHOLD	Snack Attack™ (2)	Logo
	Snack Byte™ (1)	Lisp
Recipe File	Rear Guard™ (17)	Script II™ (8)
Menu Planner	Commbat™ (17)	Co-Pilot™ (8)
Home-1	Raster Blaster™ (21)	Super-Pilot™ (8)
Grocery List	Choplifter™ (20)	Graphic II™ (8)
Home Safe Home	Adventure™ (3)	Pascal Tutor™ (22)
Mostly Basic Household Program	Poker Tournament™ (17)	Pascal Programmer™ (22)
Package	Serpentine™ (20)	PLANNING AND ANALYSIS
Recipe Handler II	Chess™ (24)	
Home Finance Programme	LANGUAGE, UTILITY & MISCELLANEOUS	Desktop/Plan™ (5)
Super Bar and Wine Guide		Supercalc™ (13)
GAMES	CP/M® Operating System (4)	Visicalc 3.3™ (5)
		Visitrend + Visiplot™ (5)
Sneakers™ (1)	Pascal	Visischedule™ (5)
Astec™ (2)	Pilot	Dow Jones Connector™ (14)
Swash Buckler™ (1)	Fortran	Perselect Calc™ (16)
The Blade of the Black Pool™ (1)	Cobol	Multiplan™ (3)
Lemmings™ (1)	Forth	
Olympics de Cathlon™ (3)	Basic	
Casino™ (2)	Assembly Language	



WORD PROCESSING	FILING & RECORD KEEPING	EDUCATIONAL
Easywriter <sup>TM</sup> (23)		Advanced Mathematics
Magic Window <sup>TM</sup> (18)	Visifile <sup>TM</sup> (5)	Basic Learning Skills
Super Text	Visidex <sup>TM</sup> (5)	Biology
Micro-Pro Wordstar <sup>TM</sup> (6)	Stoneware DB Master 3.0 <sup>TM</sup> (7)	Business Management
Micro-Pro Spellstar <sup>TM</sup> (6)	d Base II <sup>TM</sup> (19)	Chemistry
Micro-Pro Mailmerge <sup>TM</sup> (6)	New PFS Personal Filing System <sup>TM</sup> (11)	Computer Science
The Executives Secretary <sup>TM</sup> (25)	New PFS Personal Report System <sup>TM</sup> (11)	Demonstration Programs
The Word Handler II <sup>TM</sup> (12)	New PFS Graphics <sup>TM</sup> (11)	Electronics
Mailmerge <sup>TM</sup> (6)	MAG/Base <sup>TM</sup> (15)	Elementary Mathematics
Perfect Writer <sup>TM</sup> (16)	Perfect Filer <sup>TM</sup> (16)	Energy
Perfect Speller <sup>TM</sup> (16)	Infostar <sup>TM</sup> (6)	Engineering
ACCOUNT & INVENTORY	SCIENTIFIC & ENGINEERING	Foreign Language
		General Science
		Graphics
		Health
The Controller 1.1 (GBS 1)	Liquid & Gas Flow Calculation	Language Arts
Accounts Receivable <sup>TM</sup> (9)	Machine Part Quoting	Miscellaneous
General Ledger <sup>TM</sup> (9)	Microcomputer Aided Design of Active	Music
Inventory <sup>TM</sup> (9)	Filters	Physics
Accounts Payable <sup>TM</sup> (9)	Moment of Inertia & Element of Triangle	School Administration
Peachtree General Leader <sup>TM</sup> (10)	Beams	Social Studies
Peachtree Accounts Receivable <sup>TM</sup> (10)	Engineering Applications of Computer	Statistics
Peachtree Accounts Payable <sup>TM</sup> (10)	Graphic	Utilities
Peachtree Payroll <sup>TM</sup> (10)	Coordinate Geometry	Word Processing
Peachtree Mailing List <sup>TM</sup> (10)	Architectural Specification	
Peachtree Inventory <sup>TM</sup> (10)	Manufacturing Cost Estimate (MCE)	

- (1) SIRIUS SOFTWARE, INC.  
(2) DATAMOST, INC.  
(3) MICROSOFT CORPORATION  
(4) DIGITAL RESEARCH  
(5) VISICORP  
(6) MICROPRO  
(7) STONEWARE INC.  
(8) APPLE INC.  
(9) SOFTWARE DIMENSIONS

- (10) PEACHTREE SOFTWARE  
(11) SOFTWARE PUBLISHING CORPORATION  
(12) SILICON VALLEY SYSTEMS, INC.  
(13) SORCIM CORP.  
(14) DOW JONES SOFTWARE  
(15) MAG MICRO APPLICATION GROUP  
(16) PERISOFT SOFTWARE, INC.  
(17) ADVENTURE INTERNATIONAL  
(18) ARTSCI

- (19) ASHTON-TATE  
(20) BRODERBUND SOFTWARE  
(21) RUDGECO  
(22) DENVER SOFTWARE  
(23) IUS  
(24) ODESTA CORPORATION  
(25) SOF/SYS INC.

<sup>TM</sup> are registered trademarks of the corresponding companies



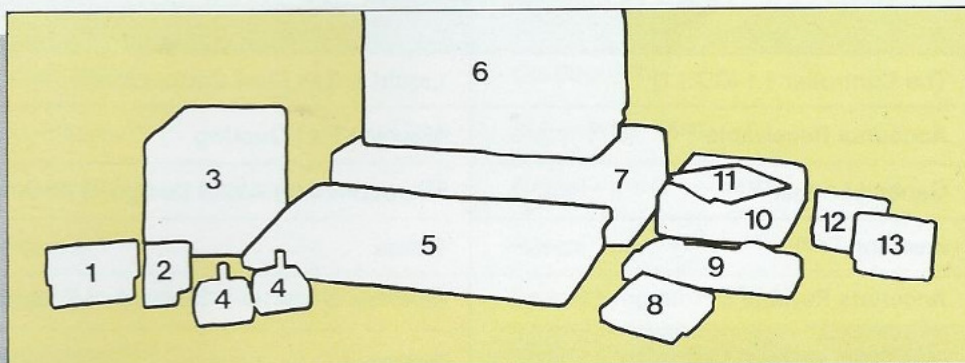


## YOU CANT' BEAT THE SYSTEM

The LASER 3000 starts where most ordinary computers leave off. And will grow as far and as wide as present and foreseeable computer technology allows.

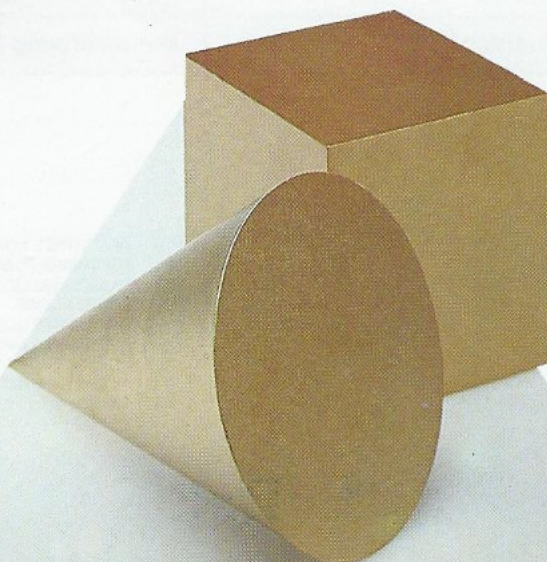
### A soft machine. For hard applications.

The LASER 3000 has been creatively engineered for versatility. With 2 built-in microprocessors, the 6502A for central processing, the 8048 for I/O processing and 2 LSI controller-processor chips designed by Video Technology, you can tailor your LASER 3000 system for dedicated applications, such as word-processing, accounting or graphics design, or you can build it into a powerful, general purpose system, and you can even expand it specifically to become an all-encompassing home entertainment system. The possibilities are truly endless.



- (1) ADAPTER
- (2) JOYSTICK CONTROLLER
- (3) DUAL DISK DRIVES
- (4) JOYSTICKS
- (5) MAIN UNIT
- (6) MONITOR
- (7) EXPANSION BOX

- (8) CP/M CARTRIDGE
- (9) MODEM
- (10) SINGLE DISK DRIVE
- (11) SYSTEM DISKETTE
- (12) RS232 INTERFACE
- (13) DISK CONTROLLER







## LASER 3000 Specifications

LASER 3000 is a complete, self-contained personal computer based on the popular 6502A microprocessor and can tap into the tremendous software library of Apple® II. Standard features include 64K Bytes RAM, 24K Enhanced Microsoft® BASIC, 80 column text, 560H × 192V color graphic display, 81 key sculptured keyboard and high efficiency switching power supply. Also included as standard are Centronics® bus printer interface, Cassette interface and 4 channel sound generator.

### Processors

- 6502A Central Processor running at 2MHz or 1MHz
- 8048 as I/O processor.
- Two custom design LSI's for video processing, memory management, and system control.

### Memory

- 64K Bytes User RAM standard.
- On Board expandable to 192K Bytes RAM.
- 24K Bytes Enhanced Microsoft BASIC in ROM.

## VIDEO DISPLAY

- **TEXT**
  - 40 columns × 24 rows or 80 columns × 24 rows software selectable.
  - 5 × 7 characters in 7 × 8 matrix.
  - Upper and lower case characters.
  - One of Eight colors for characters/graphics and background — Red, Green, Blue, Cyan, Magenta, Yellow, Black and White.
  - Character set with normal, inverse and flashing capabilities.
- **GRAPHICS**
  - 280H × 192V 6 colours — Black, White, Violet, Green, Blue, Orange.
  - 280H × 192V 8 colours bit image — Black, White, Red, Green, Blue, Cyan, Magenta, Yellow.
  - 560H × 192V 6 colours — Black, White, Violet, Green, Blue, Orange. (High resolution colour monitor required)
  - Back drop of 8 colours
  - All graphic modes software selectable.

## I/O

- **Keyboard**
  - 81-key sculptured typewriter keyboard.
  - Numeric keypad.
  - 8 user defined function keys.
  - Cap-lock indicator.
- **Video Output**
  - Composite video output.
  - RGB output to colour monitor.
  - Optional RF Module to home television.

- **Sound output**
  - 4 channel programmable sound generator with 6 octaves.
  - Audio speaker built-in.
- **Printer Interface**
  - Centronics bus printer interface built-in.
  - Cassette interface built-in.
  - RS 232C interface optional
  - Joystick and interface module optional.
  - Floppy disk controller module optional.
  - Single/Dual disk drive optional.
  - CP/M® cartridge optional.

## Power & Television System

- **Power supply:** 110V 50Hz/60Hz, 200/220/240V 50Hz/60Hz option.
- **PAL, NTSC, SECAM video systems option.**
- **UHF, and VHF channels option.**

## Dimension & Weight

- **Unit dimension:** 495L × 250W × 90Hmm
- **Weight:** 3.9Kg
- **Gift box dimension:** 545L × 300W × 200Hmm
- **Carton dimension:** 113L × 640W × 440H mm (4 pack)
- **Gross weight:** 16Kg



**INFORMA****Informatics Services**

Dotterbloemkreek 65-A / Postbus 114  
2353 JB / 2350 AC Leiderdorp  
Tel.nr 071-411230 Gironr 3119162

**LASER™ 3000 Comparison Chart**

	Laser 3000	Apple II +	Franklin 1000	Atari 800	Commodore 64
Built-in ROM	24K	12K	12K	10K	20K
CPU speed	2MHz/1MHz	1MHz	1MHz	1.8MHz	1MHz
Built-in Microsoft Basic	YES	YES	YES	NO	NO
Built-in RAM	64K	48K	64K	16K	64K
RAM expansion	192K	64K	64K	48K	N/A
Sculptured Typewriter Keyboard	YES	NO	YES	NO	NO
No. of keys	81	51	72	61	66
Separate numeric keypad	YES	NO	YES	NO	NO
Function keys	8	N/A	N/A	4	4
Cursor keys	4	2	2	N/A	N/A
Upper/lower case	YES	NO	YES	NO	NO
Built-in 80 column display	YES	NO	NO	NO	NO
Maximum color graphics resolution	560 × 192	280 × 192	280 × 192	320 × 192	320 × 200
8 Color bit image graphics	YES	NO	NO	NO	NO
Sound channels	4	1	1	4	3
ADSR envelope	YES	NO	NO	NO	YES
Cassette interface	YES	YES	YES	YES	YES
Built-in Centronics printer interface	YES	NO	NO	NO	NO
Sound on TV	YES	NO	NO	YES	YES
Separate cartridge slot	YES	NO	NO	YES	YES
Connection to Home TV set	YES	YES	YES	YES	YES
Video output	YES	YES	YES	YES	YES
RGB output	YES	NO	NO	NO	NO
Built-in switching power supply	YES	YES	YES	NO	NO
CP/M compatibility	YES	YES	YES	NO	YES
Apple II software compatibility	YES	YES	YES	NO	NO

## LASER™ 3000 REDUCES ALL THOSE COMPUTER ADS YOU'VE BEEN READING INTO ONE EDIBLE BYTE!

It's hard to tell just which computer is the best buy these days. Everyone is making claims. And even computer experts are getting confused.

To simplify the situation, LASER 3000 has compiled a comparison chart to give you an idea of how computer stack up, when placed side by side.

The LASER 3000 is the latest in a wide range of innovative computer products from one of the world's fastest growing micro-electronics companies. Video Technology Ltd.

Microsoft® & MS DOS are registered trademark of Microsoft Inc., U.S.A.

Apple® is a registered trademark of Apple computer Inc.



From the computer wizards of Video Tech

**VIDEO TECHNOLOGY LTD.**

23rd floor, Tai Ping Industrial Centre,  
Block 1, Ting Kok Road, Nam Hang,  
Tai Po, N.T., Hong Kong.

Tel: 0-6587662 0-6587011

Telex: 55305 VITEC HX

Cables: VITECHNO HONG KONG

**VIDEO TECHNOLOGY (U.S.) Inc.**

2633 Greenleaf,  
Elk Grove Village,  
IL 60007 U.S.A.

Tel: (312) 640-1776

Telex: 9102220357

**VIDEO TECHNOLOGY (U.K.) LTD.**

The Old Malthouse,  
5 The Broadway,  
Old Amersham,  
Bucks HP 7 OHL U.K.

Tel: 02403 28414

Telex: 83286 LZL G

© 1983 Video Technology Ltd. HongKong.  
All Rights Reserved. Products shown  
are covered by Industrial Property Rights.  
Specifications are subject to change  
without further notice.

\* All information based on published data.