

COMPAQ'S PREMIER DESKTOP PCs SUPERIOR IN EVERY WAY.

COMPAQ DESKPRO XL FAMILY



Compaq Deskpro XL Personal Computers are designed to meet the needs of the most demanding user. As Compaq's premier business PCs, they provide a unique and unmatched combination of power, functionality and flexibility.

- **Optimised Pentium & Pentium Pro processor performance**
- **Outstanding PCI-based Matrox Millennium graphics**
- **Innovative, value-added features**
- **Flexibility now and in the future**

Recent enhancements and technical innovations have extended the capabilities of this world-renowned family: the new Deskpro XL 6000 Series PCs, for example, incorporate the very latest Intel Pentium® Pro processor, the acclaimed Matrox Millennium Graphics Controller and the Windows NT operating system, perfectly suiting the corporate power user.

The Compaq Deskpro XL Family – the ultimate business PCs for demanding business users.

COMPAQ

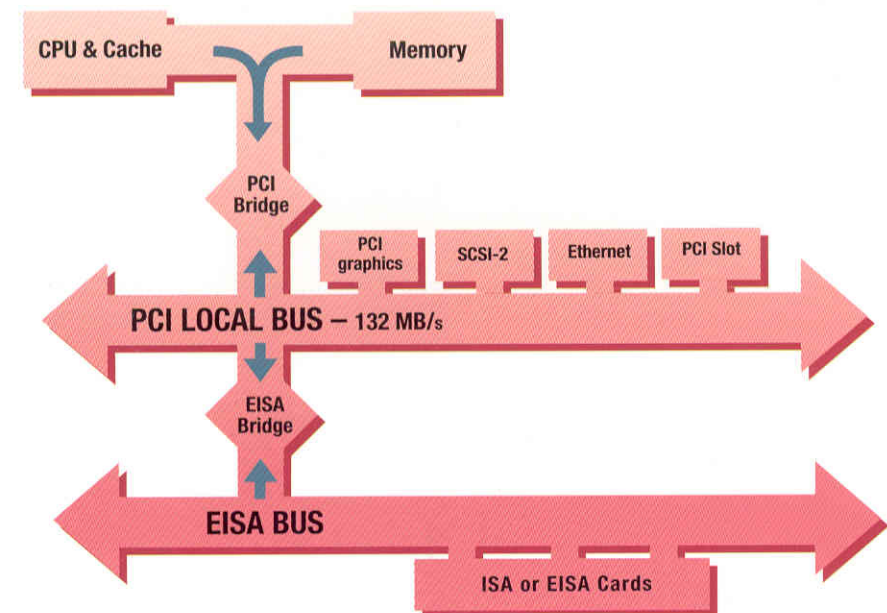
THE COMPAQ DESKPRO XL FAMILY

The Compaq Deskpro XL Family continues to grow from strength to strength. Recent enhancements to Compaq's flagship series of desktop PCs significantly boost processor, data transfer, networking and graphics capabilities. Clearly, these enhancements also fulfil Compaq's promise of performance scalability beyond the Pentium processor. The result is a range of ultimate business computers delivering unparalleled performance, unrivalled graphics, a rich feature set and incredible flexibility.

Unparalleled performance

In every way, Deskpro XL PCs meet and exceed the requirements of the most demanding users. Choose the model that suits your needs now – equipped with either a Pentium processor or the astoundingly powerful new Pentium Pro processor – safe in the knowledge that Compaq, in close cooperation with Intel, always provides dependable upgradability.

To optimise overall performance levels, there's the unique Compaq combination of generous RAM, high speed, high capacity hard disks, open, non-



Peripheral Component Interconnect (PCI) Architecture takes peripherals – such as graphics, disk drives and network interfaces – off the I/O bus and connects them through a PCI bridge to the high speed, 132-MB/s throughput CPU bus. This allows for a faster data transfer to each peripheral, significantly increasing overall system performance.

proprietary Peripheral Component Interconnect (PCI) Local Bus Architecture and PCI-integrated, high performance Ethernet, SCSI-2 and graphics controllers.

Unrivalled graphics

For the first time ever, Deskpro XL PCs come as standard with the widely acclaimed Matrox Millennium Graphics Controller. Based on improved 64-bit architecture, this outstanding controller delivers the fastest graphics performance in the PC industry. It includes digital video and 3-D acceleration – ideal for multimedia, CAD/CAM and

even video conferencing applications – and takes full advantage of new Window RAM (WRAM), the latest dual-ported memory technology.



Speaker, microphone and volume control are all built into the high quality Vocalyst Keyboard.

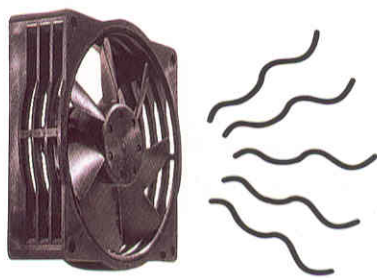
With this controller and a standard 2 MB of WRAM, each Deskpro XL supports up to 256 colours at 1600 x 1200

— BUILT ON A 10 YEAR TRADITION OF DESKPRO QUALITY

resolution (an optional 6 MB of WRAM takes this up to 16.7M true colour support) and, for excellent display clarity, refresh rates of up to 200-Hz.

Rich feature set

Innovative design features make it a pleasure to work with these PCs. For comfort and practicality, the Compaq Vocalyst Keyboard brings to your fingertips a high fidelity speaker, microphone, volume control, interfaces and ingenious mouse cable capture system. This new keyboard also makes business audio easy to use. Voice-annotating documents, reading back figures in a spreadsheet, adding comments to a slide show — all this is greatly simplified.

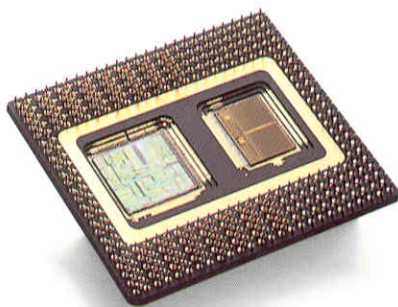


Compaq SilentCool Fan

For near silent operation and efficient system cooling, there's the Compaq SilentCool Fan — its advanced design was inspired by helicopter rotor blades. In addition, to protect our environment, the unique energy

FOR POWER USERS — THE DESKPRO

For the demanding power user, Compaq is extremely proud to introduce its most advanced desktop PCs in the Deskpro XL 6000 Series.



Deskpro XL 6000 Series PCs optimise new Intel Pentium Pro processor technology.

Optimised for the Pentium Pro processor

These workstation-class products are not only equipped with but also fully optimised for the new Intel Pentium Pro processor. A 256-KB cache memory is integrated on the processor. There's a large 2.15-GB SCSI Hard Disk Drive. The new Matrox Millennium Graphics Controller provides matchless performance — up to 23.2 million WinMarks using the WinBench 95 test.

The 32-bit Windows NT 3.51 operating system is included. Plus, of course, there's

remarkable flexibility now and for the future with five expansion slots and five drive bays.

ECC memory & DIMMs

As higher processing speeds and 32-bit applications place significant demands on the memory subsystem, all models in the Deskpro XL 6000 Series come as standard with 32 MB of Error Checking and Correcting (ECC) Memory. This type of memory has long been employed by Compaq in its server products, and provides valuable error detection and correction capabilities.

For improved performance and system reliability, these models support new Dual Inline Memory Modules (DIMMs), which are



**MICROSOFT
WINDOWS NT**

In a true 32-bit environment, Pentium Pro processor runs 40-60% faster than the Pentium processor. To ensure you get the very most from Deskpro XL 6000 Series PCs, Compaq provides Windows NT plus optimised drivers and utilities for other 32-bit operating systems.

TY, RELIABILITY AND COMPATIBILITY.

XL 6000 SERIES.



The cartridge used in the PowerDrive CD-ROM Drive can be rewritten up to 1/2 million times and holds up to 650 MB of data. This practical, highly accessible medium is ideal for multimedia applications and for mass storage or archiving purposes.

based on a full 64-bit memory architecture. Maximum system memory expansion is a vast 512 MB.

PowerDrive CD-ROM Drive

Deskpro XL 6000 Series models also come with the new rewritable, optical quad-speed PowerDrive CD-ROM Drive. Effectively two drives in one, the PowerDrive can be used as a standard CD-ROM drive (retrieving data from industry standard CD media) or as a rewritable optical drive (reading data from and writing data to rewritable optical CDs).

So much in a single-machine. For power users, these are surely the ultimate business PCs.

saving features of these PCs minimise power demands and reduce corporate energy costs.

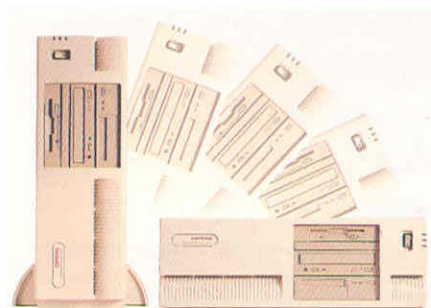
For assured ease of use and instant productivity, Deskpro XL PCs come ready for action with the most suitable pre-installed operating systems. Pentium processor models include a dual-install option of MS-DOS 6 and Microsoft Windows 3.1 or Microsoft Windows 95. Pentium Pro processor models come with the 32-bit Microsoft Windows NT 3.51 operating system on CD-ROM. All models include detailed user information and on-line documentation.

Incredible flexibility

Flexibility is, of course, the key to corporate standardisation. Processor board upgradability, five expansion slots, five drive bays, Plug and Play capabilities, numerous options for tailor-made configuration and a versatile, ergonomic design for exceptional ease of maintenance ensure that the Deskpro XL Family is the ideal corporate choice.

Use the Deskpro XL as you please – a desktop or floor standing PC. With typical attention to detail, Compaq has designed the LEDs so that

they're always visible. And in either position – vertical or horizontal – Compaq has made certain that the CD-ROM drive (on selected models) operates correctly and the air flow cools down the unit efficiently.



Use as a desktop or floor standing PC.

And proven Compaq quality

With Compaq you can be certain of reliability and compatibility. Each Deskpro XL comes with comprehensive CompaqCare support including a three year warranty and one year on-site service, the knowledgeable assistance of your local Compaq Authorised service provider and support from your local CompaqCare Centre.

Deskpro XL PCs are part of the full Compaq product range which includes notebook PCs, desktop PCs and servers.



WHEN ONLY THE MOST POWERFUL, FEATURE-RICH, HIGH QUALITY PCs WILL SUFFICE.

For certain business users, only the most powerful, feature-rich, high quality personal computers will suffice. PCs that can run multitasking operating systems and advanced applications. PCs that deliver optimised levels of processor, data transfer, networking and graphics performance. And, to protect corporate investments for years to come, PCs that combine the latest technologies with proven flexibility and upgradability. In addition, power users today place a further demand on their PCs – overall platform

optimisation for a pure 32-bit software environment.

To meet all of these specialist demands, Compaq offers the Deskpro XL Family. This flagship range of business PCs builds on all that is best in the Compaq Deskpro Line – consistent quality, stringently tested and proven reliability and unwavering industry standard compatibility. With recent enhancements, this family now also features even higher performance levels plus the very latest technical innovations.



Compaq is Microsoft's Lead Systems Partner for Windows 95. Our close working relationship means you get the very best from Compaq hardware and Microsoft software.

When business users need more, there's no need to look further than the added-value of the Compaq Deskpro XL Family for a powerful, feature-rich and highly flexible solution.



Equipped with a high performance Ethernet controller, all Deskpro XL PCs are network-ready but, equally, can be used for powerful stand-alone applications.

Deskpro XL specifications

	Processor	Upgrade Path	Standard Configurations	Graphics
Compaq Deskpro XL 5100	100-MHz Pentium microprocessor	Processor board — upgradable to future Intel processor technology	Model 1-GB/W (1-GB SCSI Hard Disk Drive); Model 2.1-GB/W/CDS (2.15-GB SCSI Hard Disk Drive). Both models: 16 MB of RAM as standard, expandable to 144 MB	PCI Local Bus Graphics with Matrox Millennium Controller; 2-MB Window RAM (WRAM), upgradable to 4-MB or 8-MB WRAM
Compaq Deskpro XL 5133	133-MHz Pentium microprocessor	Processor board — upgradable to future Intel processor technology	Model 1-GB/W (1-GB SCSI Hard Disk Drive); Model 2.1-GB/W/CDS (2.15-GB SCSI Hard Disk Drive). Both models: 16 MB of RAM as standard, expandable to 144 MB	PCI Local Bus Graphics with Matrox Millennium Controller; 2-MB Window RAM (WRAM), upgradable to 4-MB or 8-MB WRAM
Compaq Deskpro XL 6150	150-MHz Pentium Pro microprocessor		Model 2100/PD (2.15-GB SCSI Hard Disk Drive) with 32 MB of ECC memory as standard, expandable to 512 MB	PCI Local Bus Graphics with Matrox Millennium Controller; 2-MB Window RAM (WRAM), upgradable to 4-MB or 8-MB WRAM
Compaq Deskpro XL 6200	200-MHz Pentium Pro microprocessor		Model 2100/PD (2.15-GB SCSI Hard Disk Drive) with 32 MB of ECC memory as standard, expandable to 512 MB	PCI Local Bus Graphics with Matrox Millennium Controller; 2-MB Window RAM (WRAM), upgradable to 4-MB or 8-MB WRAM

Note: All models: 256 KB of integrated secondary cache memory; integrated 32-bit Compaq Ethernet Controller (RJ-45 & AUI connectors, AUI to BNC transceiver); integrated 32-bit Compaq SCSI-2 PCI Controller; 3.5" 1.44-MB Diskette Drive; 3-peripheral SCSI cable.

Models with the /W suffix: Windows models.

Models with the /CDS suffix: QuadSpeed SCSI CD-ROM Drive.

Models with the /PD suffix: QuadSpeed SCSI rewritable PowerDrive CD-ROM Drive.

Deskpro XL 6000 Series: industry standard Dual Inline Memory Module (DIMM) sockets x 4; Microsoft Windows NT 3.51 CD

Other specifications

Audio:	Integrated Enhanced Business Audio; Microsoft Windows Sound System 2.0 compatible; SoundBlaster compatibility with many leading applications; FM synthesis; audio compression/decompression; enhanced voice pilot; proof-reader; games support
Included Software:	Pentium models: Dual-install MS-DOS 6/Microsoft Windows 3.1 & Microsoft Windows 95 pre-installed. Pentium Pro models: Microsoft Windows NT 3.51 CD-ROM; CD-ROM with optimised drivers & utilities for Windows NT, Windows 95 & DOS; drivers & utilities for OS/2 2.1, Warp & SCO UNIX. All models: Diagnostics & Utilities (System Configuration, NIC, SCSI); Drivers (Graphics, NIC, SCSI); Novell Universal NetWare Client; Energy Saver software; Security Management software; Compaq Information Centre
System Architecture:	Peripheral Component Interconnect (PCI) Local Bus Architecture; Extended Industry Standard Architecture (EISA); "Plug & Play"-ready
Expansion Slots:	Total of 5 available slots: 3 8/16/32-bit EISA expansion slots; 1 shared EISA/PCI Local Bus expansion slot; 1 PCI Local Bus expansion slot (used by the Matrox Millennium Graphics Controller)
Storage:	Total of 5 mass storage device positions
Interfaces:	Serial x 2; Parallel; SCSI-2; Ethernet (AUI & RJ-45 connectors plus AUI to BNC transceiver); Keyboard x 2 (standard & Vocalyst); Pointing Device x 2 (standard & Vocalyst); Audio x 4 (2 standard & 2 Vocalyst)
Keyboard:	Compaq Vocalyst Keyboard: contains speaker, microphone, mouse interface (with cable capture system), audio interfaces & volume control
Fan:	Compaq SilentCool Fan: patented design for near silent operation
Dimensions (WxHxD):	Flexible desktop/floor standing design: 45.7 cm x 15.9 cm x 38.4 cm (18" x 6.25" x 15.1"). Stand provided as standard
Security & Network Features:	Power-on Password; Keyboard Password; QuickLock with QuickBlank; Network Server Mode; Diskette Boot Control; Diskette Drive Control; Hard Disk Drive Control; Serial Interface Control; Parallel Interface Control; Diskette Write Control; SETUP Control; Asset Management Provision; Cable Lock Provision; Administrator's Password
Power Management Features:	Compaq Energy Saver features (user selectable); optional Compaq Energy Saver monitors
Processor Options:	Pentium 120-MHz or 133-MHz Processor Board Upgrade Kit; Pentium Pro Processor Board Upgrade Kit
Memory Options:	Pentium models: 8-MB, 16-MB, 32-MB & 64-MB Single Inline Memory Module (SIMM) Memory Expansion Kits. Pentium Pro models: 16-MB, 32-MB, 128-MB & 256-MB Dual Inline Memory Modules (DIMMs). All models: 2-MB & 6-MB Window RAM (WRAM) Modules
Storage Device Options:	5.25" 1.2-MB Diskette Drive; 630-MB & 1-GB IDE Hard Disk Drive; 1.05-GB, 2.15-GB & 4.3-GB Fast-SCSI-2 Hard Disk Drives; 340/680-MB Tape Drive; 2/8-GB DAT Drive; 4/16-GB TurboDAT Drive
CD-ROM Options:	Internal QuadSpeed SCSI CD-ROM Drives
Monitor & Graphics Options:	Compaq 140 Colour Monitor (14"); Compaq 1024 Colour Monitor (14"); Compaq 151 FS Colour Monitor (15"); Compaq 171 FS Colour Monitor (17"); QVision 172 Colour Monitor from Compaq (17"); QVision 210 Colour Monitor from Compaq (21"). Please note that monitor viewing areas vary
Networking & Communications Options:	AUI to BNC Transceiver; NetFlex-2 ENET-TR Controller; DualSpeed Token Ring Module (requires NetFlex-2); NetFlex-2 TR Controller; NetFlex-2 DualPort TR Controller; IBM Auto 16/4 Token Ring Controller
Service & Support:	Three year warranty; local CompaqCare Centre telephone support; one year warranty on optional Compaq Monitors



YOUR COMPAQCARE CENTRE
Tel: 0044 181 332 3888
(for CompaqCare information)
Lines open weekdays 8am to 8pm
Fax: 0044 181 332 3409
FaxPaq: 0044 181 332 3550
Quickline (BBS) 0044 181 332 9499
CompuServe: GO COMPAQ
Internet: <http://www.compaq.com>



Compaq registered U.S. Patent and Trademark Office. Deskpro, Deskpro XL, Vocalyst & SilentCool are trademarks of Compaq Computer Corporation.
The CompaqCare logo is a servicemark of Compaq Computer Corporation. Pentium & Pentium Pro are registered trademarks of Intel Corporation in the U.S. and other countries. Product names mentioned herein may be trademarks or registered trademarks of their respective companies.
The information contained in this guide is subject to change without notice. Compaq Computer Corporation shall not be liable for technical or editorial errors or omissions contained herein; nor for any consequential damage resulting from the furnishing, performance or use of this material.

Architecture image credits. Cover page: D trois Brussels for Polak & Stapels with Intergraph software solutions. Page 5: D trois Brussels for Atelier d'arch. Sanguinetti with Intergraph software solutions.



Compaq Computer Ireland
Europa House
Harcourt Centre
Dublin 2
Tel: 01 475 4171
Fax: 01 475 4289