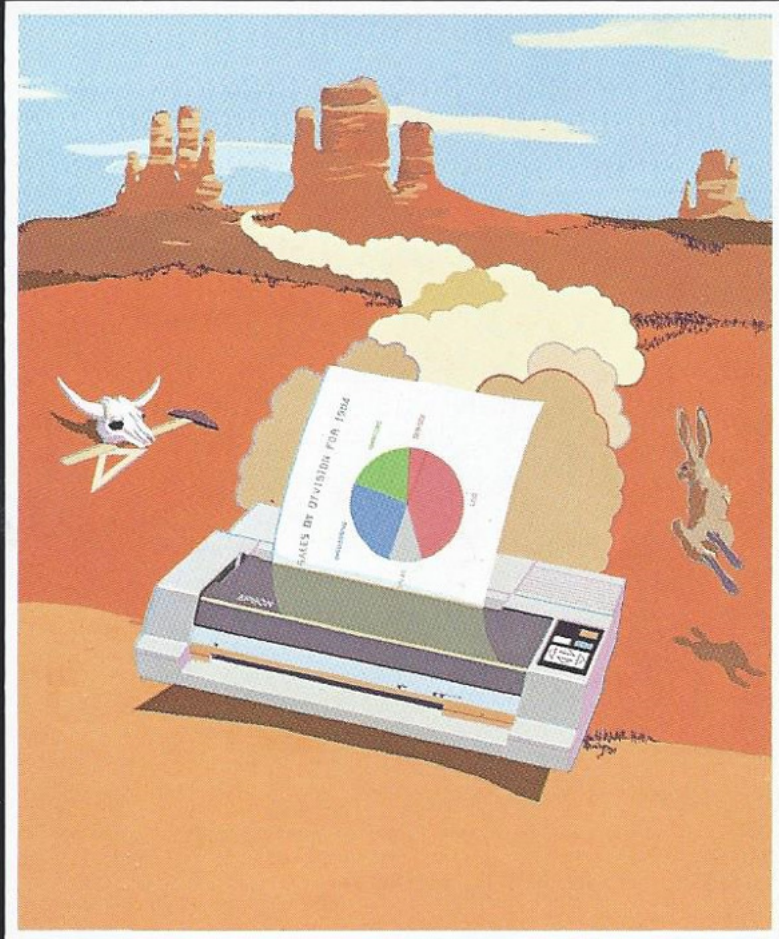


Epson HI-80TM Color Plotter



EPSON[®]

Communicate better with color.

The new Epson HI-80 Color Plotter lets you turn your personal or business computer into a powerful graphic communications tool. Add flair to your reports and letters with visual images that instantly communicate your message—at a glance.

You can produce pie charts, bar graphs, flow charts, organization charts and more, in up to ten different colors.

When you consider its high power and wide range of capabilities, the new Epson HI-80 Color Plotter is extremely affordable, too.

Highly versatile performance.

HI-80 uses standard 8½ inch letter-size paper, as well as the two common international sizes, "A4" and "B5." For real versatility, it gives you the choice of three different pen types: Water-based ballpoint pens for fine, precise lines and crisp, accurate detail. Water-based fiber pens for brilliant colors and smooth, even shading over wide areas. And oil-based fiber pens for non-absorbent surfaces such as acetate—for beautiful, full-color transparencies for overhead projection.

Easy, fast and accurate.

The HI-80 lets you mix and match up to four different colors at a time. Ink is contained in disposable, non-spillable pens that are held by a precision 4-pen cassette. Changing to any of the ten available colors takes only seconds.

Since the pens are automatically capped in the "home" position, the HI-80 is ready to go at a moment's notice. You don't have to remove and

uncap individual pens before use. Or remove and re-cap them after. You save time, and you eliminate the frustration of dried-out pens.

Besides being trouble-free and easy to operate, the HI-80 is extremely fast—nine inches per second in both X and Y axes. You get high speed, and precision, too. Repetition accuracy is rated better than 0.5 mm, with a pen-change accuracy better than 0.3 mm—a deviation of less than $12/1000$'s of an inch!

System and software compatible.

The HI-80 can be interfaced with virtually all microcomputer systems, including Apple,[®] DEC,[™] IBM,[®] Tandy/Radio Shack[®] and, of course, Epson. In

fact, if your system can run an Epson dot-matrix printer, it'll run the HI-80 Plotter, too.

Besides being programmable in BASIC, the HI-80 Color Plotter is compatible with most common personal and business software, from graphics programs like Keychart,[®] and Microsoft Chart,[®] to spreadsheets such as SuperCalc,[®] and multi-purpose programs such as the PFS[®] Series, Symphony[®] and Framework.[®]

Hard working with power to grow.

With this color plotter, you've got the ability to turn your documents into works of art. Provide the raw data, and the HI-80 does the work, with 42 built-in



graphics commands that let you cut programming time and effort to a minimum.

For an effective combination of words and visuals, the HI-80 lets you mix graphics and text on the same page. Layouts are easy, as text formatted for Epson's RX printer—the industry standard—comes out beautifully on the HI-80 Plotter.

The HI-80 can even be equipped with an optional interface that lets you take advantage of popular software that uses the HP graphics programming language.

Better built, better backed, better value.

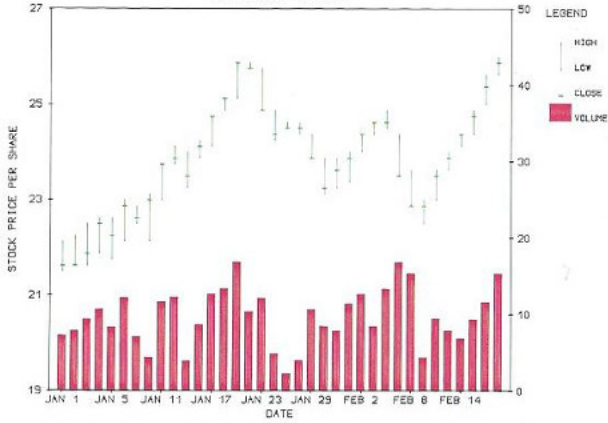
Only Epson offers you such high performance, high reliability and high quality. Only Epson offers you the confidence and solid backing of our full one-year warranty—the best in the business. And only Epson can make so much graphic power so highly affordable.

The new HI-80 Color Plotter. Easy, fully automatic operation. Up to ten different colors. Speed, accuracy and reliability. All yours—and only from Epson.

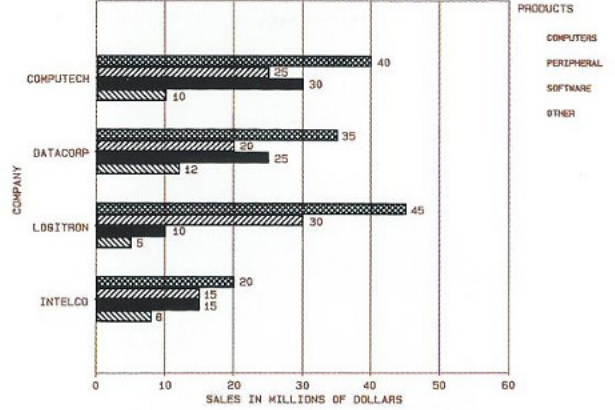
EPSON is a registered trademark of Epson Corporation.
HI-80 is a trademark of Epson America, Inc.
Apple is a registered trademark of Apple Computers, Inc.
IBM is a registered trademark of International Business Machines Corporation.
DEC is a trademark of Digital Equipment Corporation.
Radio Shack is a registered trademark and a division of Tandy Corporation.
Keychart is a trademark of SoftKey Software Products, Inc.
Microsoft Chart is a trademark of Microsoft Corporation.
SuperCalc is a trademark of Sorcim Corporation.
PFS is a registered trademark of Software Publishing Corporation.
Symphony is a trademark of Lotus Development Corporation.
Framework is a trademark of Ashton-Tate.

Print Samples

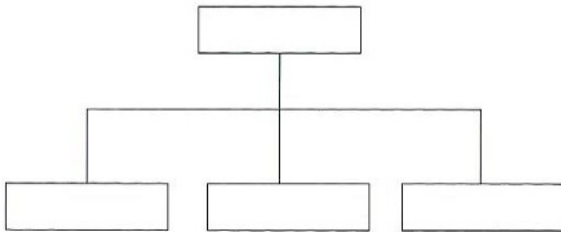
HIGH-LOW-CLOSE CHART
WATERLOO TECHNOLOGY DEVELOPMENT CORP.
GRAPHICS BY KEYCHART



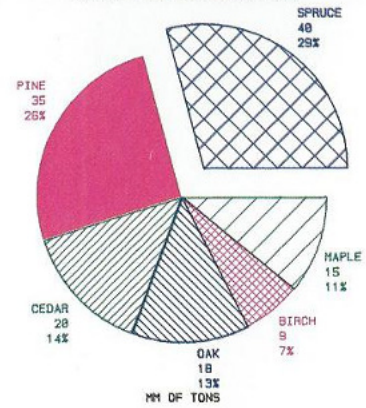
HORIZONTAL BAR CHART
GRAPHICS BY KEYCHART



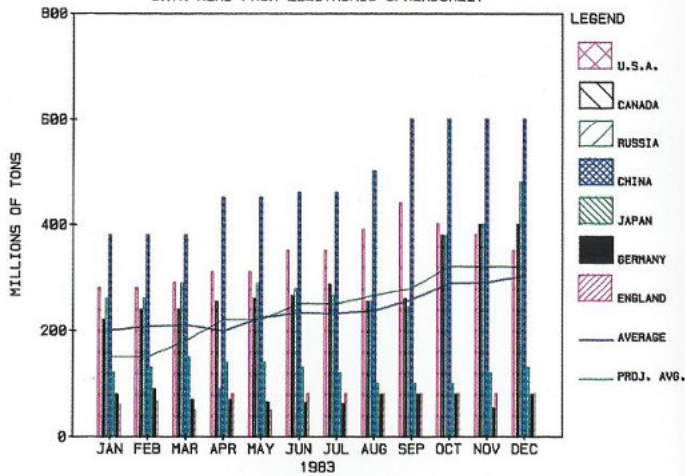
KEYCHART ORGANIZATION CHART
WITH KEYCHART YOU CAN CREATE BOX AND LINE DIAGRAMS
AND USE A WIDE RANGE OF WORD PROCESSING PROGRAMS
TO INCORPORATE TEXT INTO THEM



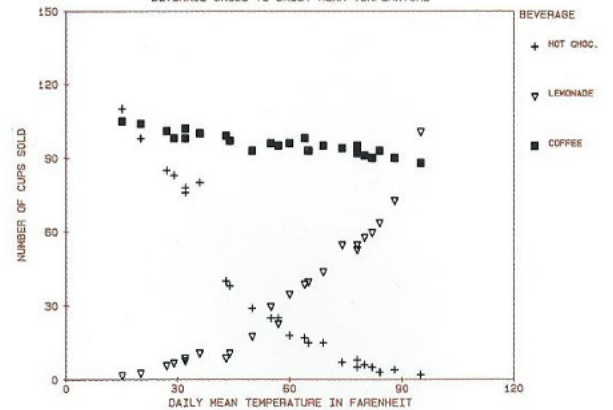
USE OF WOODS IN CONSTRUCTION
KEYCHART PRESENTATION GRAPHICS



WORLD POTASH PRODUCTION
KEYCHART PRESENTATION GRAPHICS
DATA READ FROM ELECTRONIC SPREADSHEET



KEYCHART'S X-Y SCATTER PLOTTING ABILITY
FREEMAN'S BEVERAGE PALACE
BEVERAGE SALES VS DAILY MEAN TEMPERATURE



Features: HI-80

Plotter/Printer Mechanism

Plotting type:	Paper movement
Number of pens:	Four (in cassette)
Pen types:	Ball-point (water-based ink); fiber-tip (water-based ink); fiber-tip (oil-based ink)
Colors, standard:	Red, Green, Blue, Black
Colors, optional:	Cyan, Magenta, Yellow, Brown, Orange, Purple
Media sizes:	USA—8½ in. x 11 in. (216 mm x 279 mm) ISO—A4 (210 mm x 297 mm); B5 (182 mm x 257 mm)

Plotter Mode

Effective plotting size:	10.5 in. x 7.6 in. (267 mm x 192 mm)
Maximum plotting speed:	9 IPS (230 mm/sec.) either axis
Minimum step size:	.004 in. (0.1 mm)
Repetition accuracy:	Within .012 in. (0.3 mm) single pen; within .020 in. (0.5 mm) different pens

Commands: 17 drawing functions; 42 plotting functions

Printer Mode

Commands: 55 codes, compatible with Epson printer command language

Interface

Standard: Centronics parallel
Optional: RS-232C serial; IEEE-488 GPIB; parallel w/ 2K buffer; parallel w/ 32K buffer; serial w/ 32K buffer

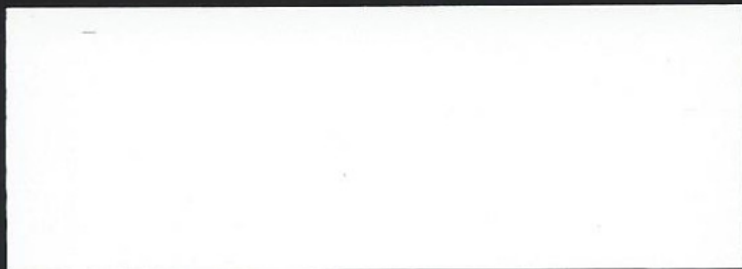
Special Feature

Options: HP-GL emulation ROM; user-defined character RAM; printer expansion ROM

Dimensions: 81 mm high x 415 mm wide x 272 mm deep (3.2 in. x 16.3 in. x 10.7 in.)

Weight: 4.5 kg. (9.9 lb.)

Electrical requirements: 110 VAC, ± 10%; 49.5-60.5 Hz; 30 VA maximum



Number one. And built like it.

EPSON
EPSON AMERICA, INC.

2780 Lomita Boulevard • Torrance, CA 90505 • (213) 539-9140